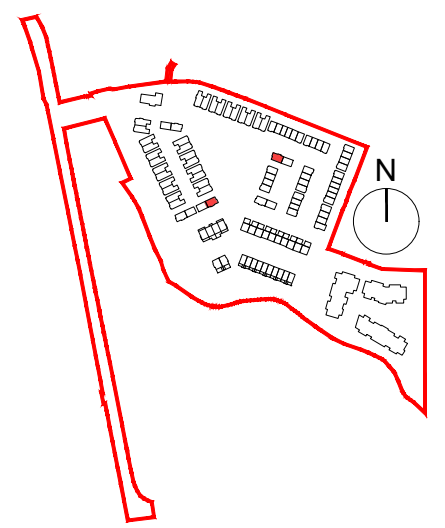
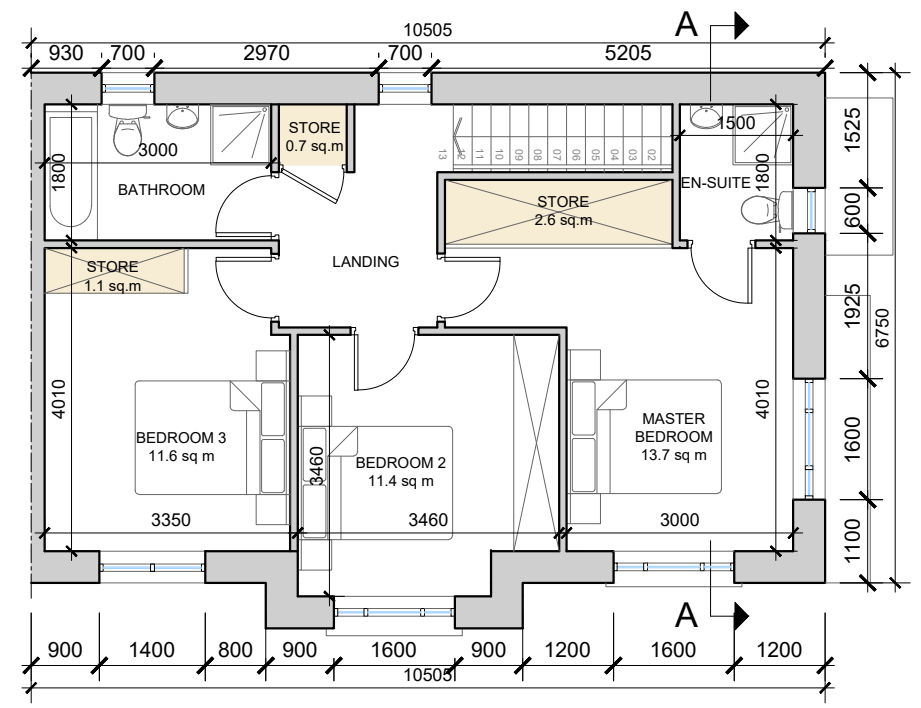
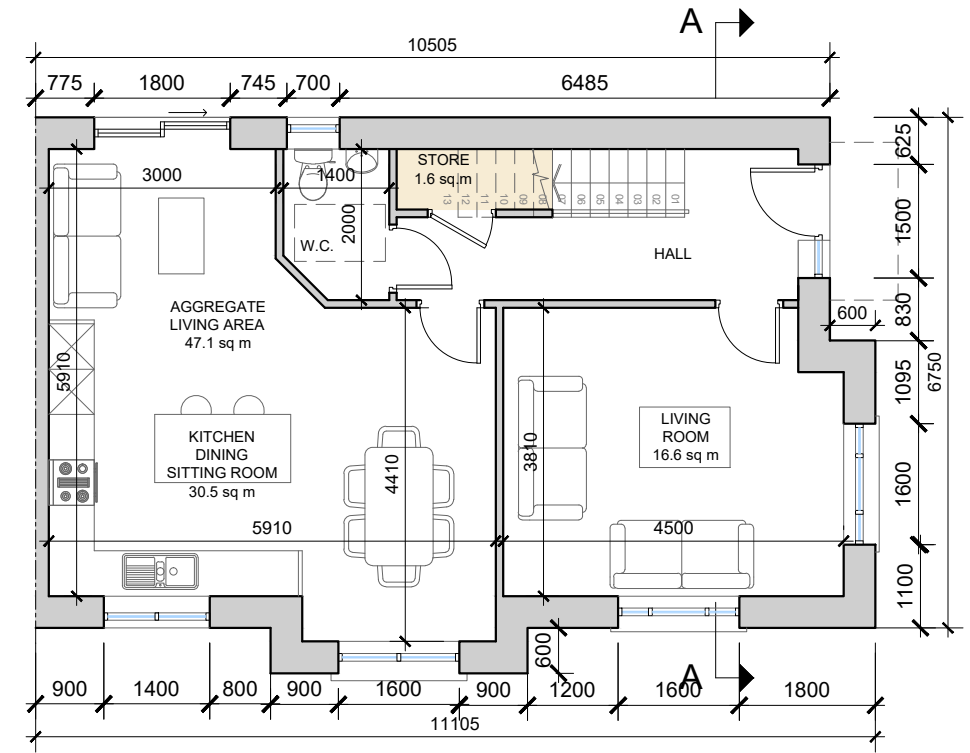


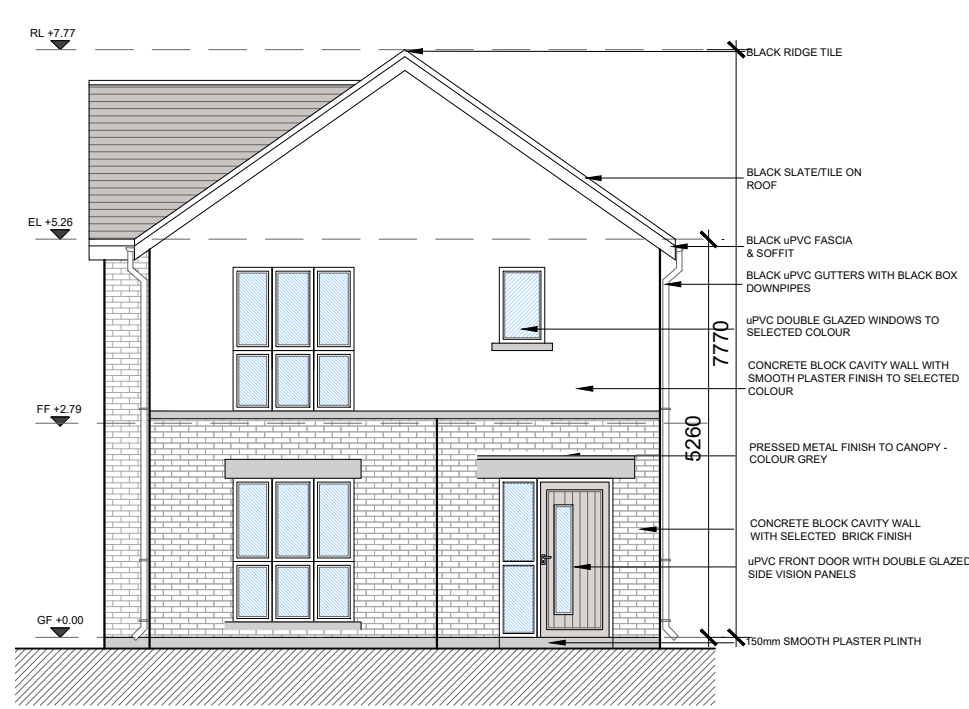
DO NOT SCALE. WORK TO FIGURED DIMENSIONS ONLY.
 ALL EXISTING DIMENSIONS TO BE CHECKED ON SITE.
 DRAWN ON AUTOCAD R2004 AT DEADY GAHAN ARCHITECTS LTD
 LAYERS ON THIS DRAWING COMPLY WITH BS 1192: PART 5

HOUSE TYPE B1
 3-bed Semi Detached (6 person)
AREA: 122.0 SQ.M.
1,313 SQ.FT.
 STORAGE total - 6.0 sq.m.

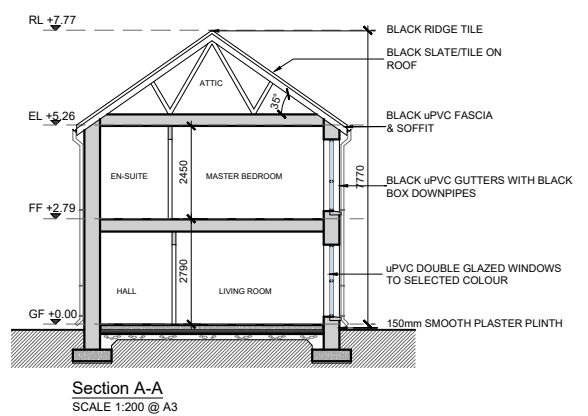
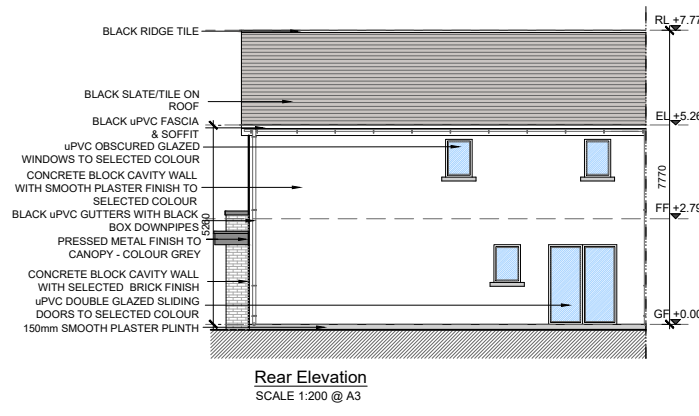


NOTE: POSITION OF NORTH POINT & LEVELS VARY.
 SEE SITE PLAN FOR ORIENTATION - DWG NO. 23049/P/003

NOTE: OBSCURED GLAZING TO BE ADDED TO ALL FIRST FLOOR WINDOWS WITH A POTENTIAL OF OVERLOOKING INTO REAR GARDENS



House Type B1 - Character Area 1
 See site plan (dwg no. 23049/P/003) for material locations



date	rev	name	chk	note
07.05.24	P1	MP	EJG	ISSUE FOR PLANNING

DEADY GAHAN ARCHITECTS

EASTGATE VILLAGE, LITTLE ISLAND, CORK
 T: 021 4355018 W: WWW.DGARCHITECTS.IE
 EMAIL: INFO@DGARCHITECTS.IE

Project
 PROPOSED RESIDENTIAL DEVELOPMENT
 AT PORT ROAD, KILLARNEY, CO. KERRY

Drawing title
 HOUSE TYPE B1 - 3-BED SEMI DETACHED
 PLANS, ELEVATIONS & SECTION A-A

Scale	Drawn	Checked	Date
1:100/200 @ A3	MP	EJG	07.05.24

Project No.	Dwg. No.	Revision
23049	23049/P/200	P1

Information / Comments
 Planning
 Tender
 Construction